

ITT

Residential and
Commercial Water Systems

Goulds Pumps

AquaBoost™ II

Variable Speed Constant Pressure Systems



* Available up to 100 GPM systems

FEATURES

The AquaBoost II variable speed pump controller and complete booster package kits, provide an economical answer for municipal water district customers with low water pressure. Both domestic and light commercial applications can benefit. As water use increases, the AquaBoost II changes pump speed to maintain pressure. Large supply tanks are eliminated and less wear and tear on your pump and motor.

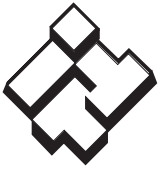
The AquaBoost II is available with a range of flow rates to handle homes with up to four baths, irrigation, filtration and fire suppression systems. Light commercial applications up to 100 GPM at 45 PSI boost. The AquaBoost II is available as either a separate controller or as part of a complete pump package with everything you need to plumb it to a domestic water line.



Goulds Pumps is a brand of ITT Corporation.

www.goulds.com

Engineered for life



ITT

GOULDS PUMPS Residential and Commercial Water Systems

COMPONENTS

1AB2 — 4.2 Amp, 1 HP AquaBoost II variable speed controller, wall mount set, transducer, pre-wired. (Pump and tank not included.)

1AB2LB1035 — AquaBoost II controller, wall mount set, LB stainless steel jet pump, transducer, V6P tank, pressure gauge, discharge tee. Controller is pre-wired to the pump. Flows to 15 GPM.

2AB2 — 6.9 Amp, 2 HP AquaBoost II variable speed controller, wall mount set, transducer, pre-wired. (Pump and tank not included.)

2AB21MC1F2B2 — AquaBoost II controller, wall mount set, MCC cast iron / stainless steel pump, transducer, V6P tank and pressure gauge. Controller is pre-wired. Flows to 27 GPM.

2AB21MC1G2A2 — AquaBoost II controller, wall mount kit, MCC cast iron / stainless steel pump, transducer, V6P tank and pressure gauge. Controller is pre-wired. Flows to 32 GPM.

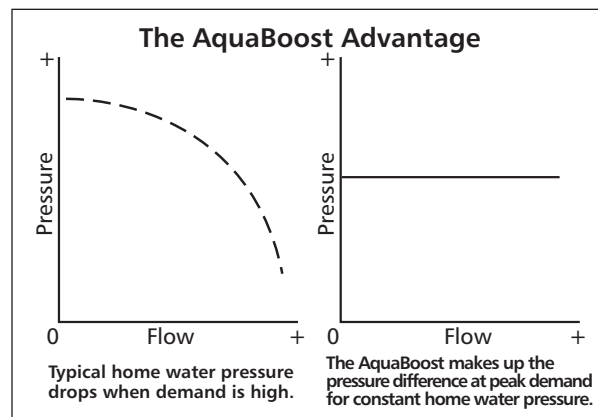
⚠ CAUTION AquaBoost System CANNOT be set above 80 psi, for the total discharge pressure (suction plus discharge).

1AB21HM1E2D0 — AquaBoost II controller, wall mount kit, HMS stainless steel pump, transducer, V6P tank and discharge pipe tee. Controller is pre-wired. Flows to 20 GPM.

1AB22HM1E2D0 — AquaBoost II controller, wall mount kit, HMS stainless steel pump, transducer, V6P tank, pressure gauge and discharge pipe tee. Controller is pre-wired. Flows to 37 GPM.

2AB22HM1F2E0 — AquaBoost II controller, wall mount kit, HMS stainless steel pump, transducer, V6P tank, pressure gauge and discharge pipe tee. Controller is pre-wired. Flows to 37 GPM.

NOTE: Relief valve, check/isolation valves, unions and external piping are not included with the AquaBoost.





ITT

GOULDS PUMPS

Residential and Commercial Water Systems

AQUABOOST CONTROLLER FEATURES

Input Power* — 200-230V ±15%, single phase (controller only)

Output Power — Up to 230V three phase (based on input voltage). Motor rated for 208-230V, ±10%.

Maximum Output Current — 4.2 amps – 1AB2
— 6.9 amps – 2AB2

Input Controls — Up and down buttons to set pressure.

Signal Lights — Power on, pump running, inverter stopped, pump stopped, standby, faults/errors.



Electrical Efficiency — Over 95% at full load

Protection Against — Short circuit, under voltage, overload, motor temperature, dead heading, run out, suction loss, sensor fault, bound pump, over voltage, static discharge. **Note:** Suction loss/run out is set for minimum 10 psi at discharge!

Ambient Temperature — 34° F to 104° F

Maximum Humidity — 95% at 104° F, non-condensing

Air Pollution — Avoid mounting in areas with excessive dust, acids, corrosives and salts.

Approvals —  

Controller Enclosure — Outdoor, NEMA 3R, IP 43 (Rain-tight)

Mounting — Wall mount with mounting hardware.

Cooling — Convection with cast aluminum heat sink.

Transducer — 0.5 - 4.5 VDC with 5 VDC power supply, 100 psi range, 80-inch 3-wire shielded cable.

Input Wire — 5 feet of 14 gauge cable. Cable is pre-wired to controller and junction box.

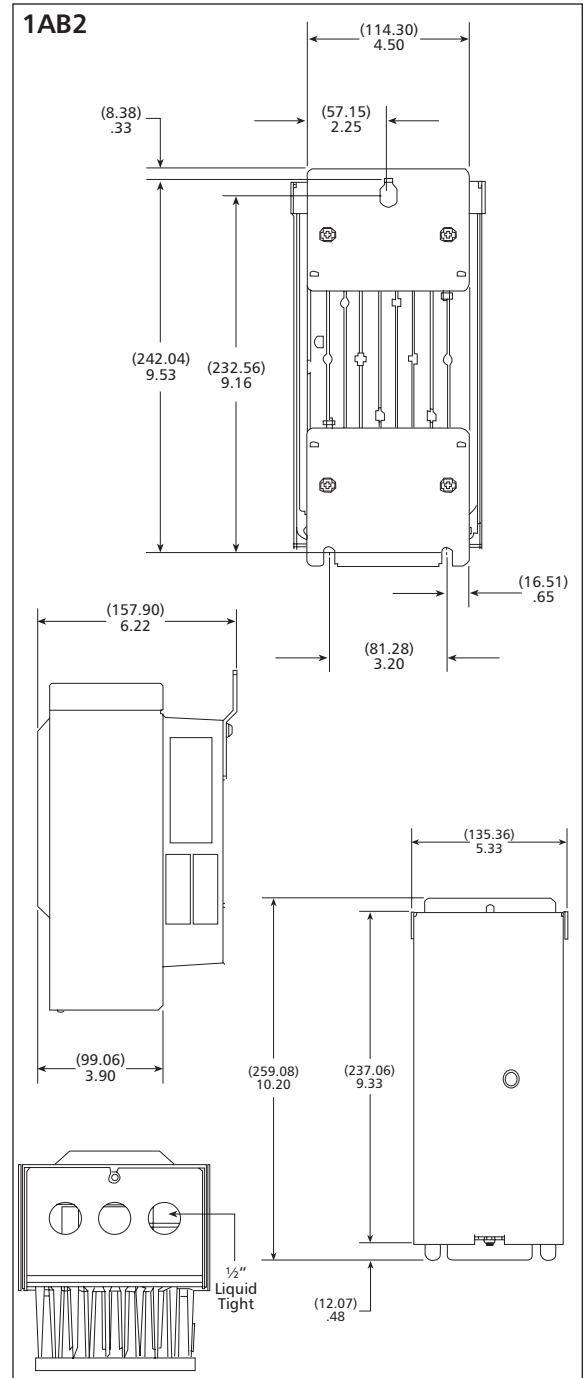
Output Wire — 10 feet of 14 gauge cable. Cable is pre-wired to controller and pump motor (when provided).

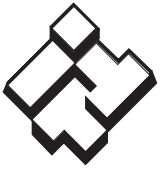
*Low input voltage may affect motor operation.

PRESSURE RANGE

Nominal Range — Field adjustable from 20 - 80 psi, total system pressure.

 **DO NOT SET REQUIRED SYSTEM PRESSURE ABOVE 80 PSI. SEVERE DAMAGE TO PLUMBING COULD RESULT.**





ITT

GOULDS PUMPS

Residential and Commercial Water Systems

SUGGESTED AQUABOOST INSTALLATION FOR MUNICIPAL WATER SYSTEM

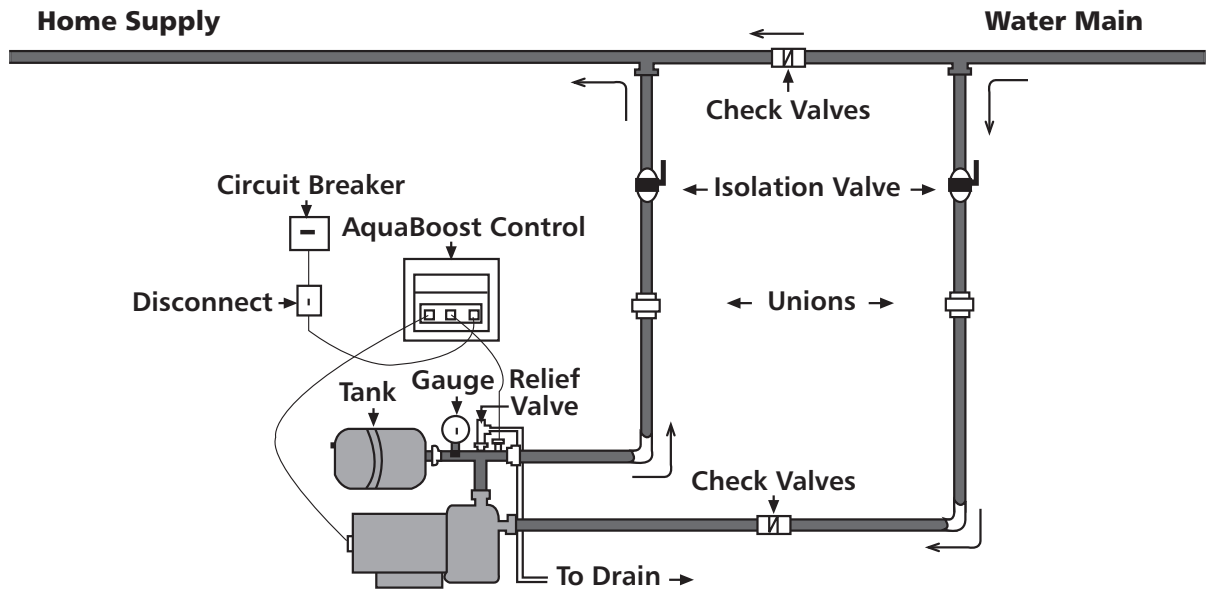
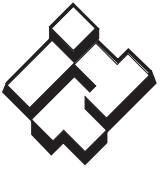


Figure 1



ITT

GOULDS PUMPS Residential and Commercial Water Systems

SUGGESTED AQUABOOST INSTALLATION FOR WELL PUMP SYSTEM

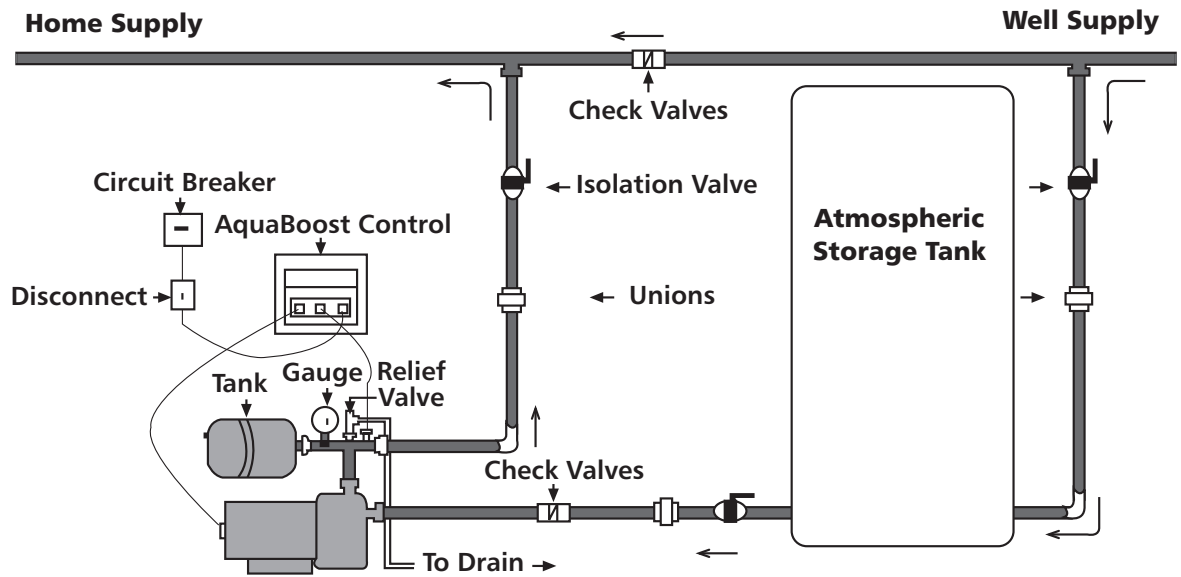
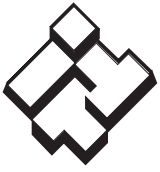


Figure 2



ITT

GOULDS PUMPS Residential and Commercial Water Systems

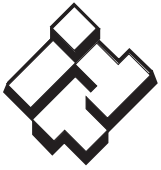
AQUABOOST II SYSTEM SELECTION

PSI BOOST	2-10 GPM	20 GPM	30 GPM	40 GPM	50 GPM	60 GPM	70 GPM	80 GPM	90 GPM	100 GPM
20	1	3	3	5	5	9	9	9	10	10
25	1	3	3	6	9	9	9	10	10	10
30	1	3	3	6	9	10	10	10	10	10
35	1	3	3	6	6	10	10	10	10	10
40	1	3	3	6	7	10	10	10	10	10
45	1	3	3	6	8	10	10	10	10	10
50	1	3	4	7	8	10	10	10	10	
55	1	3	4	7	8	10	10			
60	1	4	7	8	8					
65	2	4	7	8	8					
70	2	4	8	8						
75	4	4	8							
80	4									

1	1AB2LB1035 (1 HP, stainless steel pump, 1" discharge, 1¼" suction)
2	1AB21HM1E2D0 (1 HP, stainless steel pump, 1" discharge, 1¼" suction)
3	1AB22HM1E2D0 (1 HP, stainless steel pump, 1" discharge, 1¼" suction)
4	2AB22HM1F2E0 (1½ HP, stainless steel pump, 1" discharge, 1¼" suction)
5	2AB21MC1F2B2 (1½ HP, cast iron pump, 1" discharge, 1¼" suction)
6	2AB21MC1G2A2 (2 HP, cast iron pump, 1" discharge, 1¼" suction)
7	3AB2LCB1H2D0 (3 HP, stainless steel pump, 1" discharge, 1¼" suction)
8	5AB2LCC1J2D0 (5 HP, stainless steel pump, 1" discharge, 1½" suction)
9	2AB22MC1G2D2 (2 HP, cast iron pump, 1¼" discharge, 1½" suction)
10	5AB22MC1J2K2 (5 HP, cast iron pump, 1¼" discharge, 1½" suction)

Items # 8 and #10 do not include tank. Recommend at least 13 gallon volume bladder tank.

NOTE: PSI is boosting pressure, NOT total system pressure.



ITT

GOULDS PUMPS Residential and Commercial Water Systems

DIMENSIONS

LB PUMP (LB1035) WITH TANK AND TEE

Capacities — to 15 GPM

Rotation — Right hand clockwise, viewed from motor end

Materials — 304 stainless steel casing
Noryl impeller

Motor — 1 HP, ODP, Three Phase,
208-230/460V

Pipe Connections — 1 x 1 1/4 NPT

Maximum Temperature of Water — 120° F

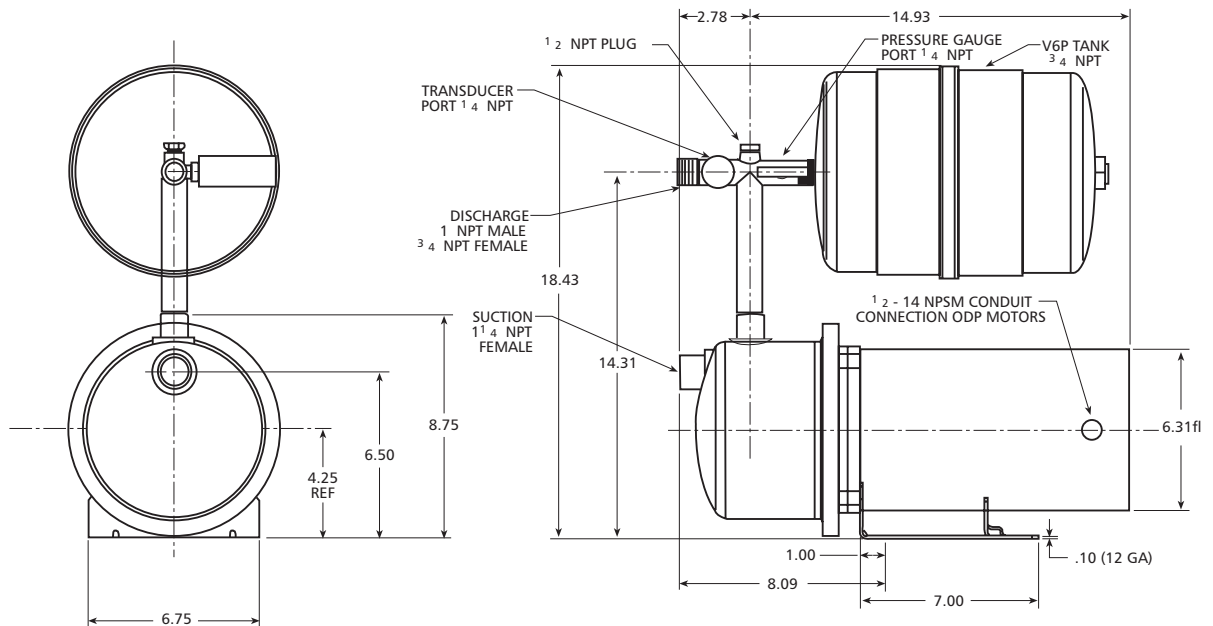
NOTE: Tank Liquid Temperature Limit is 120° F
Pump Liquid Temperature Limit is 140° F

Maximum System Working Pressure — 85 psi

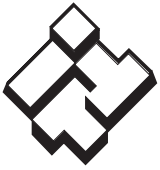
Seal — Carbon / Silicon Carbide / EPR

Overload protection, starters, heaters not required.

Dimensions are in inches.



Approximate Packaged Shipping Weight — 55 lbs.



ITT

GOULDS PUMPS Residential and Commercial Water Systems

DIMENSIONS

MCC PUMP (1MC1G2A2 AND 1MC1F2B2) WITH TANK AND TEE

Capacity — to 32 GPM (1MC1G2A2)
— to 27 GPM (1MC1F2B2)

Rotation — Right hand clockwise, viewed from motor end

Materials — Cast iron casing
316 stainless steel impeller

Motor — 1½ HP, ODP, Three Phase, 208-230/460V
— 2 HP, ODP, Three Phase, 208-230/460V

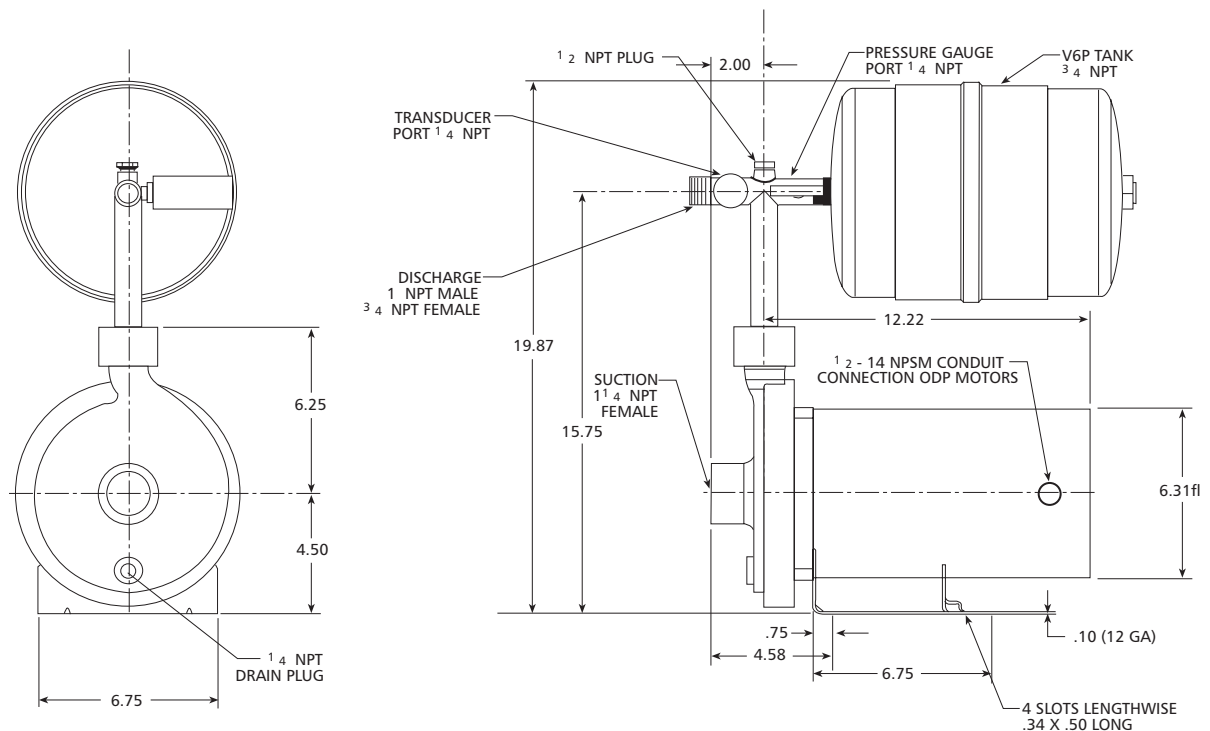
Pipe Connections — 1 x 1¼ NPT

Maximum Temperature of Water — 120° F
NOTE: Tank Liquid Temperature Limit is 120° F
Pump Liquid Temperature Limit is 212° F

Maximum System Working Pressure — 85 psi

Seal — Carbon / Silicon Carbide / EPR

*Overload protection, starters, heaters not required.
Dimensions are in inches.*



Approximate Packaged Shipping Weight — 75 lbs.



ITT

GOULDS PUMPS Residential and Commercial Water Systems

DIMENSIONS

HMS PUMPS (1HM1E2D0, 2HM1E2D0)

Capacities — to 20 GPM (1HM)
to 38 GPM (2HM4/2HM5)

Rotation — Right hand clockwise, viewed from motor end

Materials — 316L stainless steel for all liquid handling components

Motor — 1 HP, ODP, Three Phase, 208-230/460V (1HM/2HM4)
— 1.5 HP, ODP, Three Phase, 208-230/460V (2HMS5)

Pipe Connections — 1 x 1¼ NPT

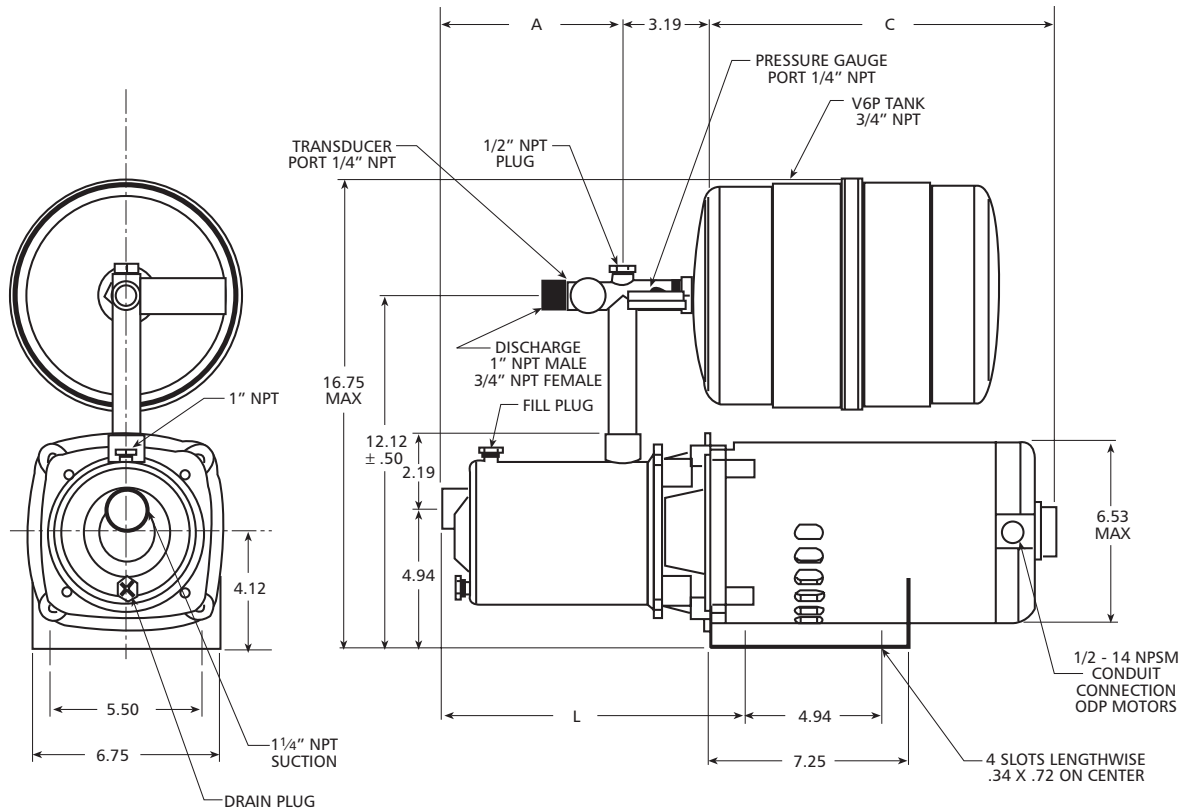
Maximum Temperature of Water — 120° F

NOTE: Tank Liquid Temperature Limit is 120° F
Pump Liquid Temperature Limit is 212° F

Maximum System Working Pressure — 85 psi

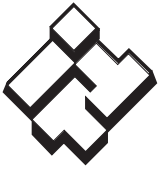
Seal — Carbon / Silicon Carbide / EPR

Overload protection, starters, heaters not required. Dimensions are in inches.



AQUABOOST	A	L	C	MOUNTING
1AB22HM1E2D0	5.75	10.75	11.62	View B
1AB21HM1E2D0	5.75	10.75	11.12	View A
2AB22HM1F2E0	6.73	11.75	11.62	View B

Approximate Packaged Shipping Weight — 55 lbs.



ITT

GOULDS PUMPS Residential and Commercial Water Systems

ALTERNATE PUMP MODELS FOR USE WITH 1AB2 CONTROLLER

MCC — 1/2, 3/4, 1 HP, 3 ph, ODP or TEFC motor versions
 3642 — 1/3, 1/2, 1 HP, 3 ph, ODP or TEFC motor versions
 GT073, GT103 — 3 ph, ODP or TEFC motor versions
 HSC07, HSC10 — 3 ph, ODP or TEFC motor versions
 HMS — 1/2, 3/4, 1 HP, 3 ph, ODP or TEFC motor versions
 5GB, 7GB — 1/2, 3/4, 1 HP, 3 ph, ODP or TEFC motor versions
 NPE — 1/2, 3/4, 1 HP, 3 ph, ODP or TEFC motor versions
 NPO — 1/2, 3/4, 1 HP, 3 ph, ODP or TEFC motor versions
 MCS — 1/2, 3/4, 1 HP, 3 ph, ODP or TEFC motor versions
 ICS — 1/2, 3/4, 1 HP, 3 ph, ODP or TEFC motor versions
 LB — 1/2 and 3/4 HP, 3 ph, ODP or TEFC motor versions

Submersible Pumps — Additional, external load filters and programming required. Consult factory.

Note: These pumps are not currently offered as a packaged kit, from Goulds Pumps.

All units require three phase motors.

Size pumps and controllers according to service factor amps of the motor.

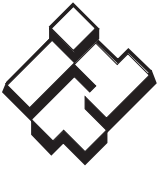
ALTERNATE PUMP MODELS FOR USE WITH 2AB2 CONTROLLER

3642 — 1 1/2, 2 HP, 3 ph, ODP or TEFC motor versions
 GT — 1 1/2, 2 HP, 3 ph, ODP or TEFC motor versions
 HSC — 1 1/2, 2 HP, 3 ph, ODP or TEFC motor versions
 HMS — 1 1/2 HP, 3 ph, ODP or TEFC motor versions
 10GB — 1 1/2, 2 HP, 3 ph, ODP or TEFC motor versions
 NPE — 1 1/2, 2 HP, 3 ph, ODP or TEFC motor versions
 NPO — 1 1/2, 2 HP, 3 ph, ODP or TEFC motor versions
 MCS — 1 1/2, 2 HP, 3 ph, ODP or TEFC motor versions
 ICS — 1 1/2, 2 HP, 3 ph, ODP or TEFC motor versions

Note: These pumps are not currently offered as a packaged kit, from Goulds Pumps.

All units require three phase motors.

Size pumps and controllers according to service factor amps of the motor.



ITT

GOULDS PUMPS
Residential and Commercial Water Systems

PACKAGED HARDWARE WITHOUT PUMP AND MOTOR (SEE PRICING PAGE)

Part Number 15K40

KIT INCLUDES:

- 1.) Tank – V6P
- 2.) Bronze Discharge Tee – AV 20-6
- 3.) Pipe Plug – 1/2", 6K68
- 4.) Pressure Gauge – AG5



ITT

**Residential and
Commercial Water Systems**



Goulds Pumps, AquaBoost and the ITT Engineered Blocks Symbol are registered trademarks and tradenames of ITT Corporation.

SPECIFICATIONS ARE SUBJECT TO CHANGE WITHOUT NOTICE.

BAQUABII May, 2007

© 2007 ITT Corporation

Engineered for life